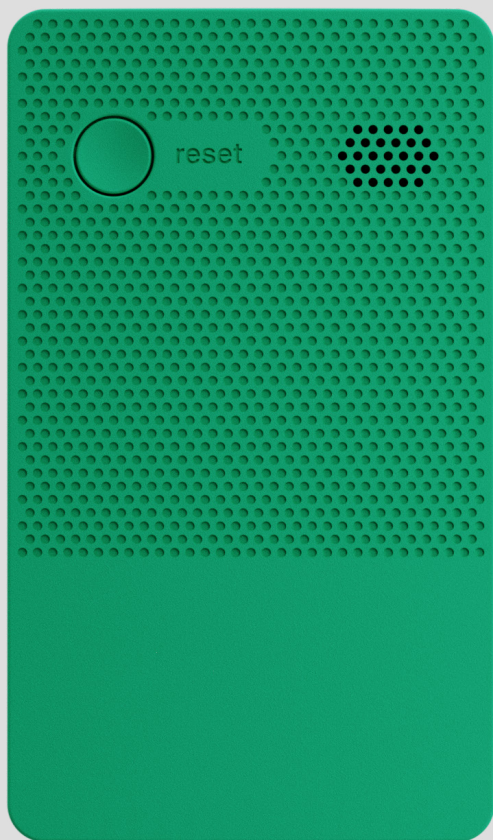


Mini

User Manual



Safety

Target group

This document is aimed at the installers of all products that include IPEE Mini (mains-operated or battery-operated).

Intended use

IPEE Mini is intended to flush urinal ceramics.

Safety notes

- Operation, care and maintenance work may only be performed by the operator or user as described in this user manual.
- Do not modify the IPEE Mini or add any additional modules.
- If there is any indication of damage or defects, do not open and attempt to repair the IPEE Mini yourself; call in a skilled person.
- Repairs may only be carried out by a skilled person using original spare parts and accessories.
- For mains-operated versions, provide an easily accessible circuit-breaker.
- For indoor use only.

Product description

Technical data

Working voltage:	6V
T Ambient:	+5 °C to +45 °C
Relative Humidity:	10 %RH to 90 %RH (non-condensing)

Disposal

Safety notes

This product meets the requirements of Directive 2011/65/EU RoHS (restriction of the use of certain hazardous substances in electrical and electronic equipment).

Disposal of waste electrical and electronic equipment



In accordance with Directive 2012/19/EU (WEEE-II), manufacturers of electrical equipment are obliged to take back old equipment and to dispose of it appropriately. The symbol indicates that the product cannot be disposed of with non-recyclable waste. Old equipment should be returned directly to IPEE, where it will be disposed of appropriately. Please contact your responsible IPEE sales company for addresses to which equipment can be returned.

2023

We reserve the right to make technical improvements and enhance the appearance of the products shown.

Technische Verbesserungen und optische Veränderungen an den abgebildeten Produkten behalten wir uns vor.

Nous nous réservons le droit d'apporter des améliorations techniques et de modifier l'apparence visuelle des produits présentés.

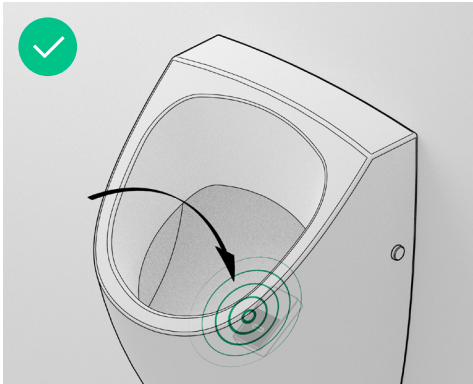
Technische verbeteringen en optische wijzigingen ten opzichte van de afgebeelde producten voorbehouden.

Con riserva di apportare modifiche tecniche.

Nos reservamos el derecho de realizar modificaciones técnicas y de aspecto de los productos representados.

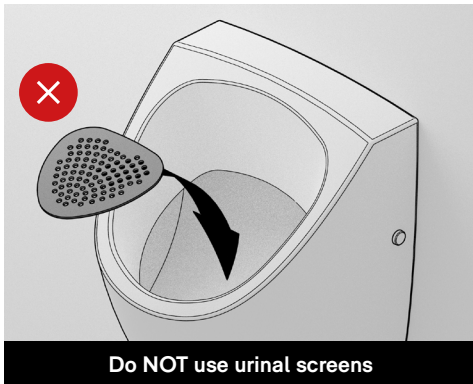
Reservamo-nos o direito de efectuar melhorias técnicas e alterações visuais que beneficiem os produtos apresentados.

Working principle



IPEE Mini detects when a urinal is actually being used as it measures through the ceramic when a conductive liquid (urine) flows over the sensor. To ensure flawless detection and performance, urine should flow directly over the sensor.

Warning!



Do NOT use urinal screens



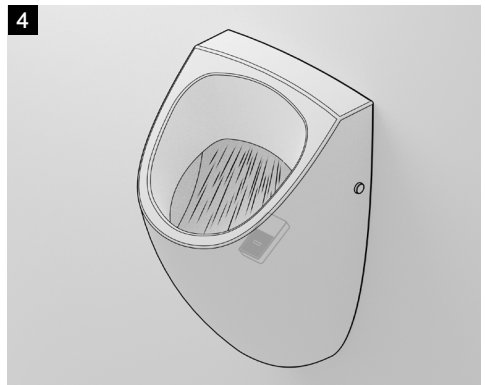
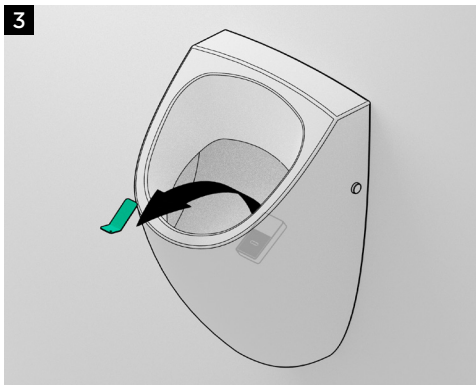
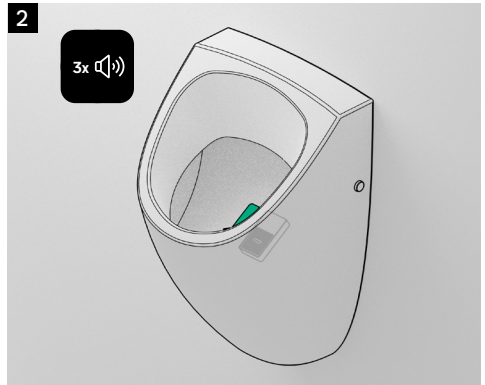
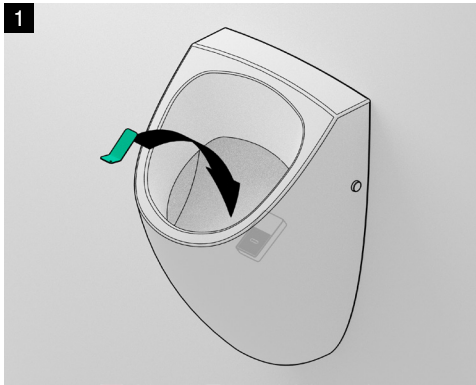
Use official IPEE accessories only

IPEE Urinal grate

CUS.01

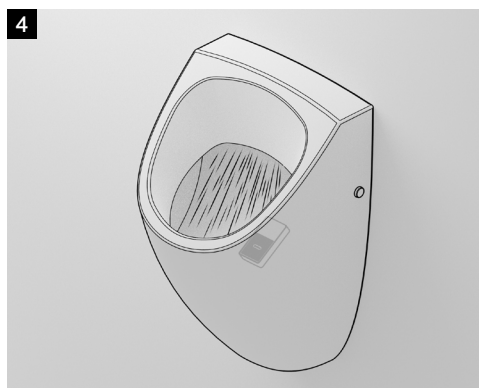
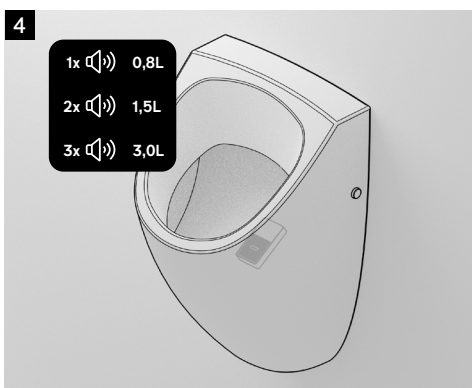
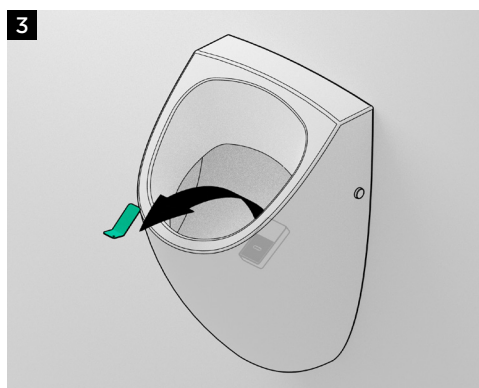
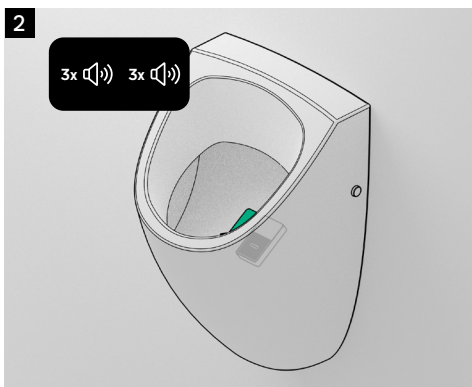
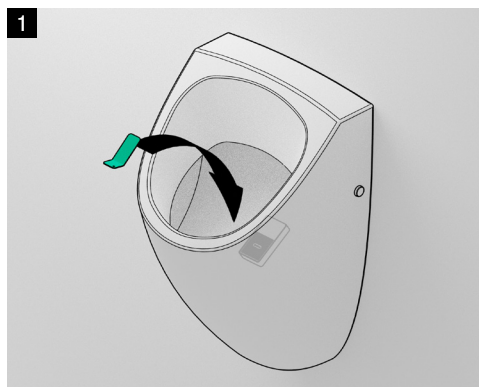
Settings

Forced flush



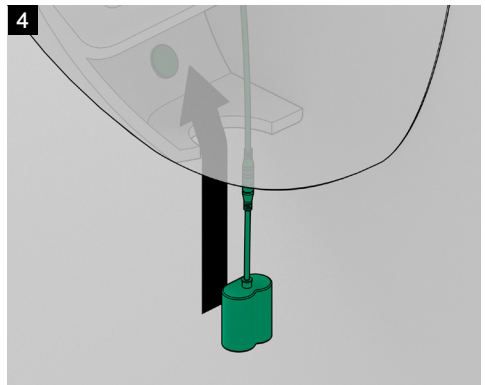
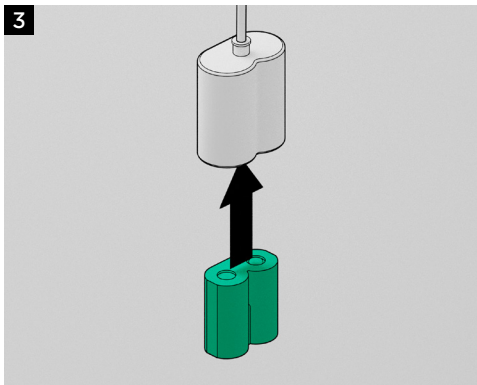
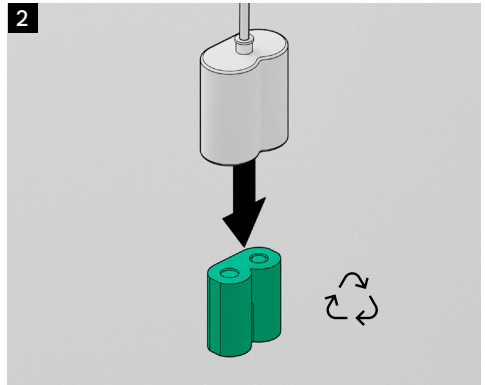
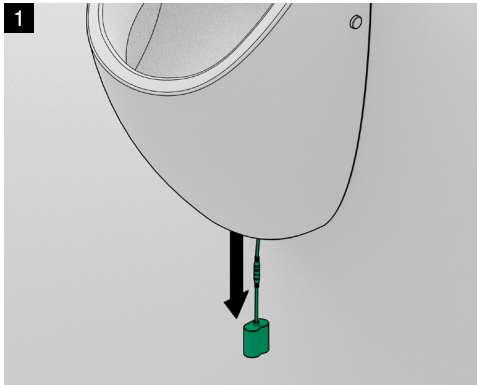
Settings

Selecting next flushing volume



Maintenance

Change battery



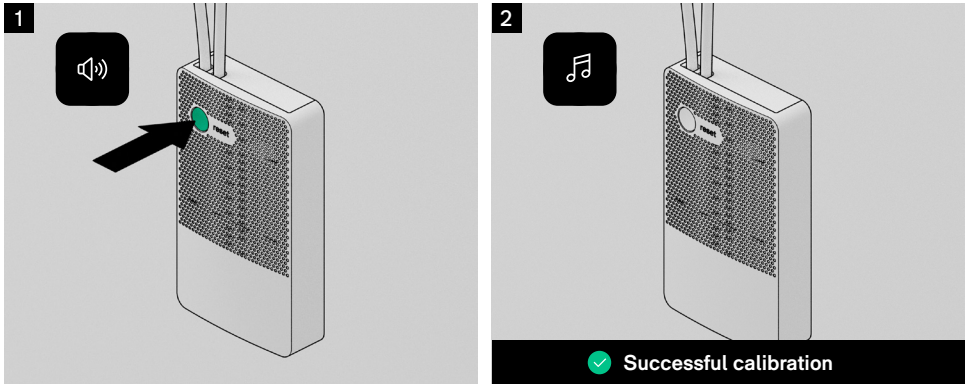
Only use batteries of the same type

6V CR-P2 battery

55700015

Maintenance

Reset sensor



Address

Overwinningstraat 41
2610 Wilrijk
Belgium

Contact

+32 3 334 13 50
info@ipee.eu
ipee.eu

I P E E