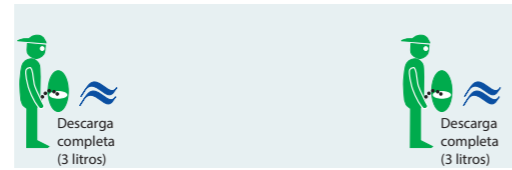
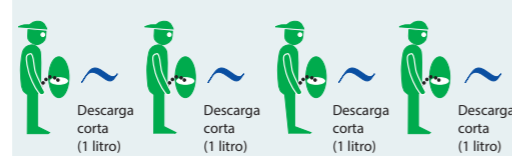
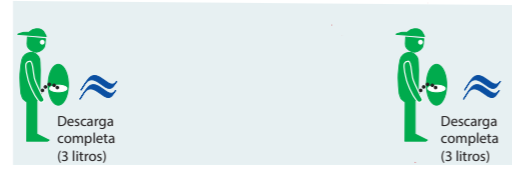


Programas de descarga

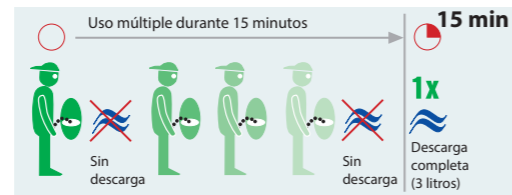
P1: STANDARD (preprogramado)



P2: ECO – programa de ahorro de agua



P3: HYBRID – sin agua con función de limpieza



Usos típicos

Cuando se necesita una descarga de 3 litros después de cada uso.

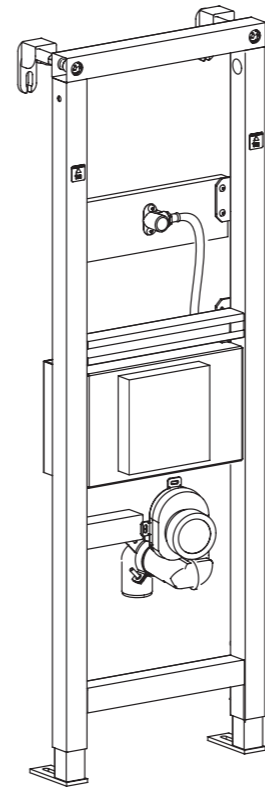
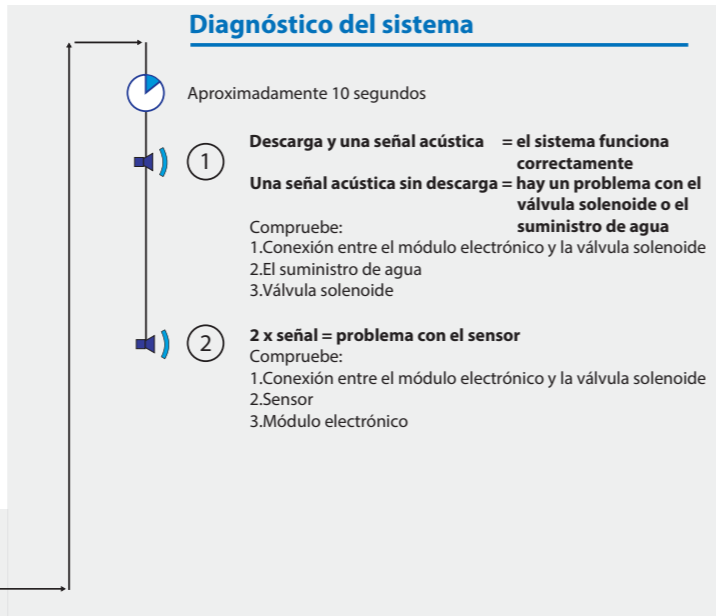
Programa ideal para hoteles, estaciones de servicio, aeropuertos y otras instalaciones públicas. En caso de uso normal se descargan 3 litros y si el uso es intensivo se pasa automáticamente a una descarga más corta de 1 litro

Uso normal → descarga completa (3L)

Uso intensivo → descarga corta (1L)

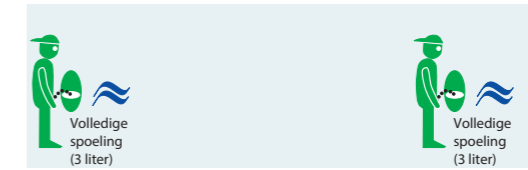
Programa especial para lugares donde el urinario se utiliza de forma intensiva en un determinado periodo de tiempo, como estadios o escuelas. Puede programarse de forma que no se limpie después de cada uso, sino un cuarto de hora después del primer uso con una descarga de 3 litros.

Instrucciones de uso

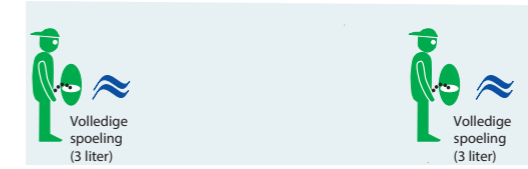


Spoelprogramma's

P1: STANDARD (voorgeprogrammeerd)



P2: ECO - waterbesparend programma



P3: HYBRID - waterloos met reinigingsfunctie



Gebruikssituaties

Daar waar een spoeling van 3 liter gewenst is na elke gebruik.

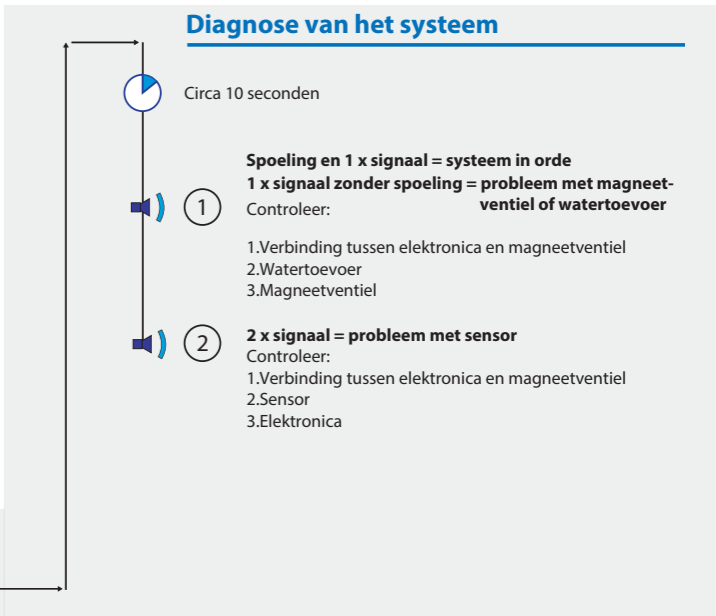
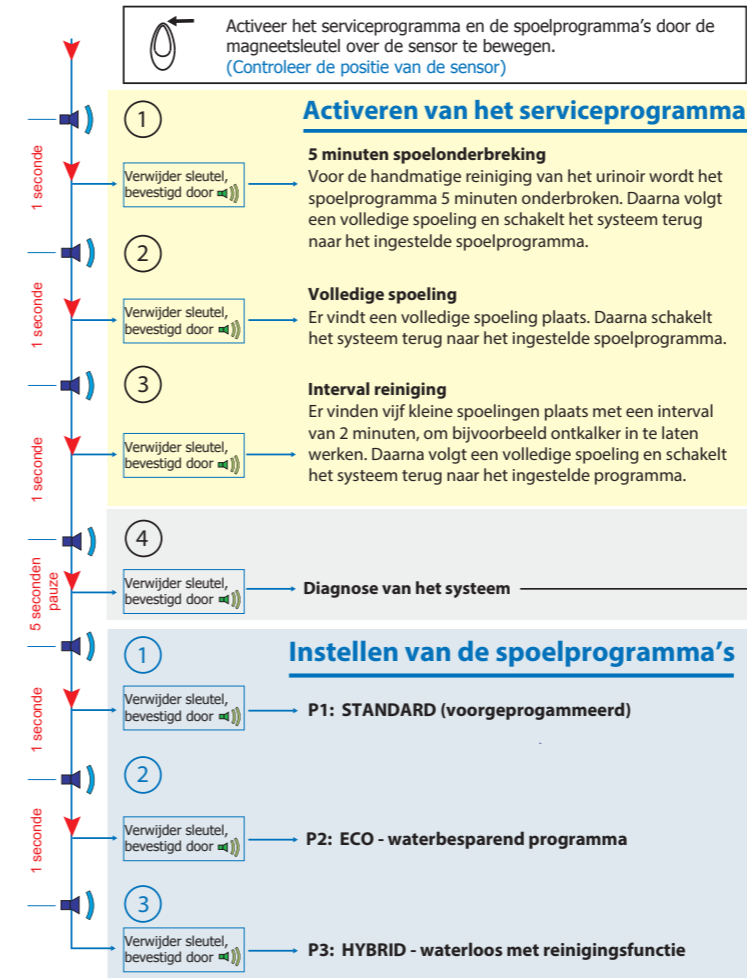
Ideaal programma voor hotels, tankstations, vliegvelden en andere openbare gelegenheden. Bij een normale mate van gebruik wordt er gespoeld met 3 liter en bij verhoogd gebruik wordt automatisch overgeschakeld naar een kortere spoeling van 1 liter.

Normaal gebruik → volledige spoeling (3L)

Verhoogd gebruik → korte spoeling (1L)

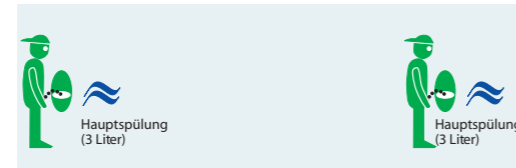
Speciaal programma voor gelegenheden waar het urinoir gedurende een bepaalde periode heel vaak gebruikt wordt, zoals in stadions of op scholen. Het urinoir wordt niet gespoeld na elk gebruik, maar wordt een kwartier na het eerste gebruik gereinigd met een 3 liter spoeling.

Gebruiksaanwijzing

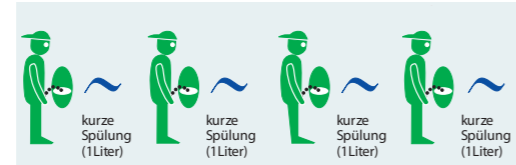
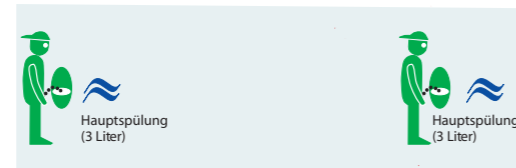


Spülprogramme

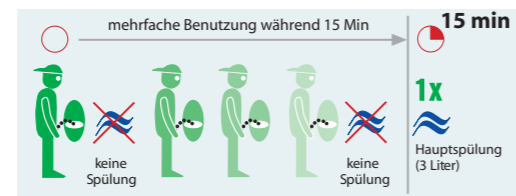
P1: STANDARD (Werkseinstellung)



P2: ECO - Wassersparprogramm



P3: HYBRID - Wasserlos mit Reinigungsfunktion



Typische Anwendungen

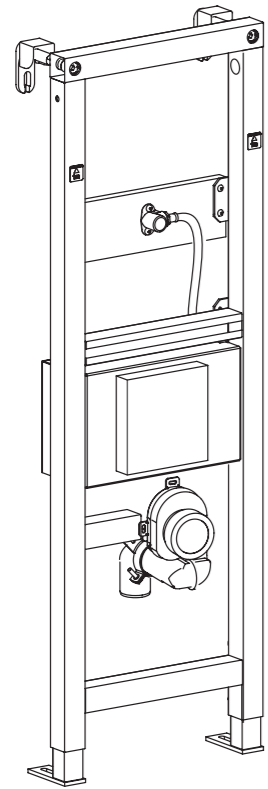
Für Orte, an denen immer eine Hauptspülung mit 3 Litern verlangt wird.

Die Spülmenge passt sich intelligent an die Häufigkeit der Benutzung an. Das optimale Spülprogramm für Hotels, Gaststätten, Messehallen, Flughäfen und sonstige öffentliche Anlagen.

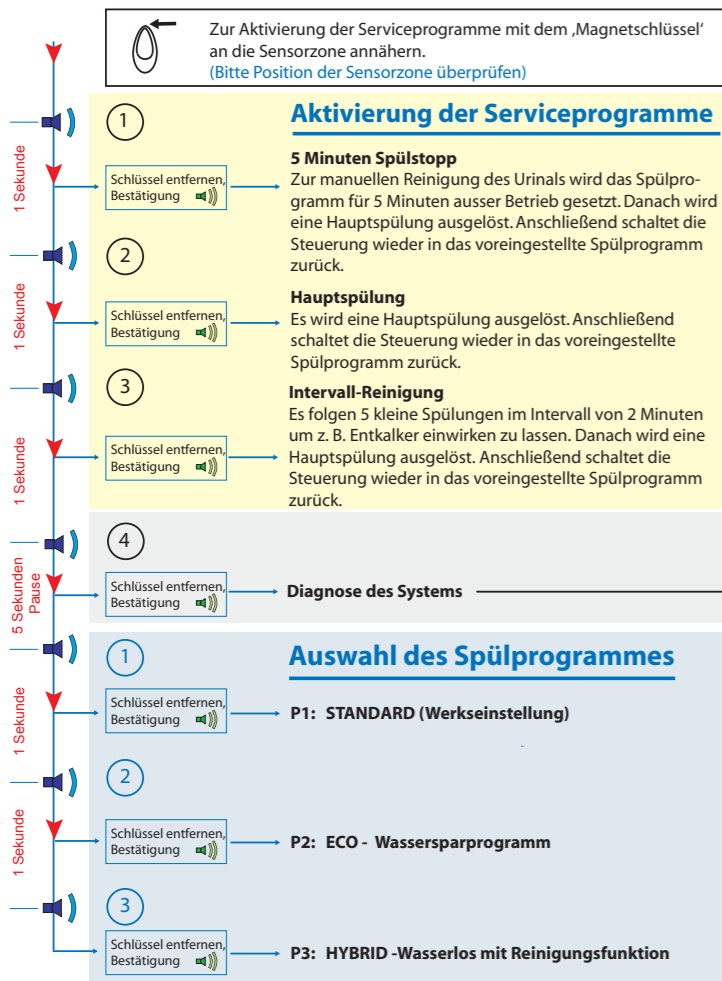
Geringe Benutzung → Hauptspülung (3L)

Erhöhte Benutzung → kurze Spülung (1L)

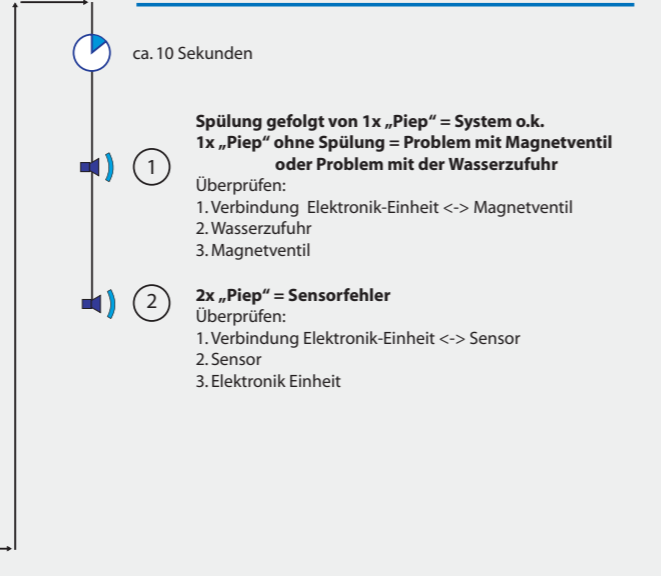
z.B. in Stadien, Veranstaltungshallen oder Schulen, wenn die Urinale nur zu bestimmten Zeiten (Pausen) und dann häufig benutzt werden. Bei der ersten Benutzung wird **keine Spülung** ausgelöst. 15 Minuten nach der Erstbenutzung erfolgt eine einmalige Hauptspülung mit 3 Litern Wasser.



Bedienungsanleitung

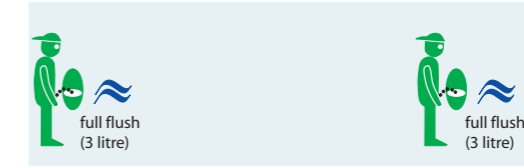


Diagnose des Systems

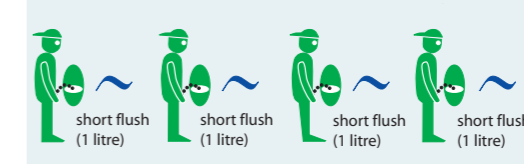
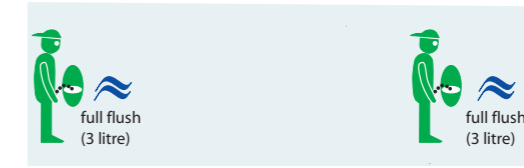


Flush Programmes

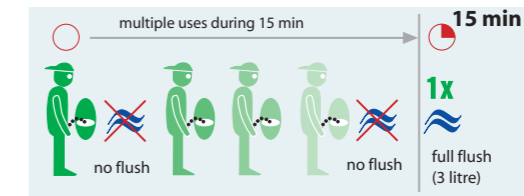
P1: STANDARD (pre-set)



P2: ECO - environmentally friendly



P3: HYBRID - waterless mode with cleaning function



Typical applications

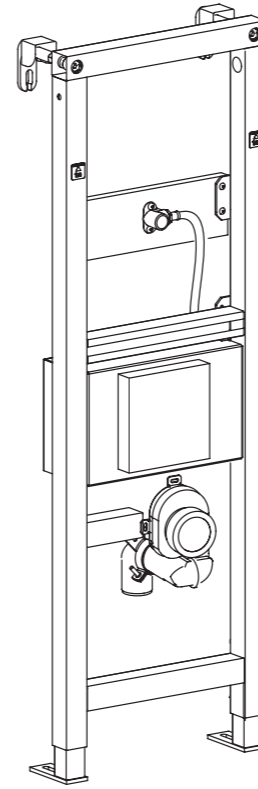
Suitable for many installations, a 3 litre flush after each use

The ideal setting for hotels, motorway services, exhibition sites, airports and similar installations.

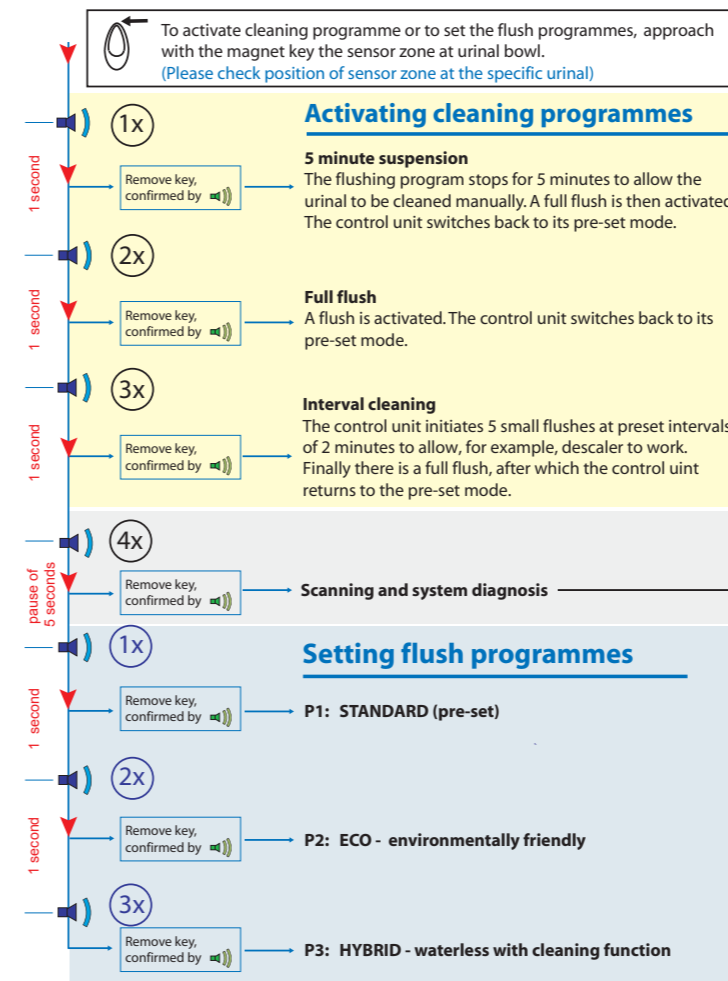
Low usage → full flush (3L)

High usage → short flush (1L)

In stadiums, concert halls or schools, urinals will be used intensively followed by a pause. iQ can be programmed to not flush after the first usage. 15 minutes after the first usage, a 3 litre flush will thoroughly clean the urinal.



Instruction Manual



Diagnosis of system

